



**Government of India
Ministry of Earth Sciences**



India Meteorological Department

PRESS RELEASE-7

Time of issue: 1730 hours IST

Dated: 31st August, 2024

Sub: (I) Cyclonic Storm “ASNA” (pronounced as As-Na) over northeast & adjoining northwest Arabian Sea and (II) Depression over Westcentral & adjoining Northwest Bay of Bengal

(I) Cyclonic Storm “ASNA” (pronounced as As-Na) over northeast & adjoining northwest Arabian Sea

Life History:

A low pressure area formed over northwest Bay of Bengal and adjoining areas of West Bengal and Bangladesh in the morning of 16th August 2024. It lay over South Bangladesh during 17th to 19th, over Central Bangladesh on 20th and over North Bangladesh on 21st and 22nd. Thereafter it moved westwards and lay over West Bengal & adjoining Northeast Jharkhand on 23rd. While moving westwards, it concentrated into a well marked low pressure area over Southeast Uttar Pradesh (UP) & adjoining areas of northeast Madhya Pradesh (MP) in the morning of 24th. Continuing to move further westwards, it intensified into a Depression over Northwest MP in the morning of 25th. It then moved west-southwestwards and intensified into a deep depression over East Rajasthan & adjoining West MP in the same midnight (2330 hours IST). The deep depression continued to move west-southwestwards and lay centred over North Gujarat region by evening of 26th August. It then moved westwards across Gujarat state during 27th-29th August. It emerged into Northeast Arabian Sea off Kachchh and adjoining Pakistan coast on 30th August morning. It intensified into a cyclonic storm “ASNA” over northeast Arabian Sea off Kachchh and adjoining Pakistan coast around noon of 30th August. It then moved nearly westwards and lay centered over Northeast Arabian Sea in the morning of 31st August.

It is moving westwards, away from the Indian coast towards Oman coast. It would maintain the intensity of cyclonic storm over north Arabian Sea for a temporary period till morning of 1st September. It would weaken thereafter and reach over Northwest Arabian Sea off Oman coast as a depression or a low pressure area on 2nd September.

Cyclone/Deep depressions/low pressure systems generally weaken during their movement over land. However, this system intensified during its movement over land due West southwestward movement of the depression. Due to West-southwestward movement over Rajasthan and Gujarat, it got continuous moisture supply from Arabian Sea and hence intensified into deep depression and maintained intensity. Further moisture supply and other environmental conditions became favourable over north Arabian Sea for its intensification into cyclonic storm around 30th noon.

Climatology of cyclonic storms over the Arabian Sea is given in Annexure-I.

Contact: Cyclone Warning Division, Office of the Director General of Meteorology, India Meteorological Department, Ministry of Earth Sciences, E-mail: cyclonewarningdivision@gmail.com

Current Status and Forecast:

The **Cyclonic Storm “ASNA” (pronounced as As-Na)** over northeast & adjoining northwest Arabian Sea moved westwards with a speed of 15 kmph during past 6 hours and lay centered at 1430 hours IST of 31st August, 2024 over the same region near latitude 23.6°N and longitude 64.4°E, 460 km west of Naliya (Gujarat), 310 km west-southwest of Karachi (Pakistan), 210 km south-southeast of Pasni (Pakistan) and 620 km east of Muscat (Oman).

It is likely to continue to move nearly westwards over northeast & northwest Arabian Sea and maintain its intensity till morning of 1st September. Thereafter, it is likely to move west-southwestwards for subsequent 24 hours and weaken gradually into a depression over northwest Arabian Sea by morning of 2nd September 2024.

Forecast track and intensity are given in the following table:

Date/Time(IST)	Position (Lat. °N/ long. °E)	Maximum sustained surface wind speed (Kmph)	Category of cyclonic disturbance
31.08.24/1430	23.6/64.4	70-80 gusting to 90	Cyclonic Storm
31.08.24/1730	23.6/64.2	70-80 gusting to 90	Cyclonic Storm
31.08.24/2330	23.6/63.4	65-75 gusting to 85	Cyclonic Storm
01.09.24/0530	23.5/62.5	60-70 gusting to 80	Cyclonic Storm
01.09.24/1130	23.2/61.8	50-60 gusting to 70	Deep Depression
01.09.24/2330	22.6/61.1	40-50 gusting to 60	Depression

Warnings:

(i) Wind warning:

- Squally wind speed reaching 45-55 kmph gusting to 65 kmph is prevailing along & off Pakistan coasts on 31st August and 1st September.
- Squally wind speed reaching 40-50 kmph gusting to 60 over adjoining Saurashtra & Kachchh coasts on 31st August and 1st September.
- Gale wind speed reaching 70-80 kmph gusting to 90 kmph prevailing over northeast Arabian Sea, is likely to continue from morning to evening of 31st August and decrease gradually thereafter becoming squally wind speed reaching 40-50 kmph gusting to 60 kmph by morning of 1st September. It will further decrease thereafter.
- Gale wind speed reaching 70-80 kmph gusting to 90 kmph prevailing over adjoining northwest Arabian Sea off Pakistan coast. Thereafter, the winds would gradually decrease becoming squally wind speed reaching 50-60 kmph gusting to 70 kmph by evening of 1st September and improve thereafter gradually.
- Squally wind speed reaching 45-55 kmph gusting to 65 kmph is likely to prevail over adjoining central Arabian Sea till 2nd September morning and improve thereafter gradually.
- Strong wind speed reaching 30-40 kmph gusting to 50 kmph likely along and off Gujarat, Maharashtra & Karnataka coasts on 31st August & 1st September.

(ii) Sea condition:

- Squally weather with Rough to very rough sea conditions is very likely to prevail along & off Gujarat & adjoining north Maharashtra Coasts till 31st August evening.
- Squally weather with Rough sea to very rough sea conditions is likely along & off Pakistan coast till 1st September morning.
- Very rough to high sea condition is likely to prevail over northeast Arabian Sea off Pakistan coast during 31st August and improve thereafter becoming rough sea condition by morning of 1st September and improve thereafter.
- Very rough to high Sea condition is likely to prevail over northwest Arabian Sea off Pakistan and southeast Iran coasts from 31st August till 1st September, Rough sea condition on 2nd September and improve thereafter.

(iii) Fishermen warning:

Fishermen are advised not venture into

- Northeast & adjoining Eastcentral Arabian Sea and along & off Gujarat & adjoining north Maharashtra Coasts till 31st August.
- Northeast & adjoining eastcentral Arabian Sea off Gujarat coast and along & off Pakistan coasts during 31st August to 1st September.
- Northwest & adjoining westcentral Arabian Sea and along & off Pakistan coast from 31st August till 2nd September.

(II) Depression over Westcentral & adjoining Northwest Bay of Bengal

The depression over westcentral & adjoining northwest Bay of Bengal off north Andhra Pradesh & South Odisha coasts moved northwestwards with a speed of 08 kmph during past 6 hours and lay centered at 1430 hours IST of today, the 31st August, 2024 over the same region near latitude 18.1°N and longitude 84.1°E, about 30 km south of Kalingapatnam (Andhra Pradesh), 90 km east-northeast of Visakhapatnam (Andhra Pradesh) and 150 km south-southwest of Gopalpur (Odisha).

It is likely to move northwestwards and cross north Andhra Pradesh and adjoining south Odisha coasts between Visakhapatnam and Gopalpur close to Kalingapatnam around late evening/night of today, the 31st August 2024.

Warnings:

(i) Rainfall Warning:

Odisha and Chhattisgarh: Light to moderate rainfall at most places with heavy to very heavy rainfall at isolated places on 31st August & 1st September over south Odisha and south Chhattisgarh.

Coastal Andhra Pradesh: Light to moderate rainfall at most places with heavy to very heavy rainfall at a few places and extremely heavy rainfall at isolated places likely on 31st August. Light to moderate rainfall at most places with isolated heavy rainfall likely on 1st September.

Telangana: Light to moderate rainfall at most places with heavy to very heavy rainfall at a few places and extremely heavy rainfall at isolated places on 31st August and isolated heavy to very heavy rainfall on 1st September.

Contact: Cyclone Warning Division, Office of the Director General of Meteorology, India Meteorological Department, Ministry of Earth Sciences, E-mail: cyclonewarningdivision@gmail.com

(ii) Wind warning:

- Squally weather with wind speed reaching 45-55 kmph gusting to 65 kmph likely over Westcentral and adjoining Northwest Bay of Bengal on 31st August and 1st September.
- Squally wind speed reaching 45-55 kmph gusting to 65 kmph is likely to prevail along & off North Andhra Pradesh & south Odisha coasts on 31st August and 1st September.
- Squally weather with wind speed reaching 35-45 kmph gusting to 55 kmph is likely to prevail along and off north Odisha and south Andhra Pradesh coasts on 31st August and 1st September.

(iii) Sea condition:

- Rough to very rough sea condition is very likely to prevail over Westcentral and adjoining Northwest Bay of Bengal on 31st August and 1st September.
- Rough to very rough sea condition is very likely to prevail along & off North Andhra Pradesh & south Odisha coasts on 31st August and 1st September.

(iv) Fishermen warning:

Fishermen are advised not venture into

- Westcentral & adjoining northwest Bay of Bengal till 1st September and along & off south Odisha and north Andhra Pradesh Coasts till 1st September.

❖ **Impact Expected (Andhra Pradesh, south Odisha, Telangana and south Chhattisgarh)**

- Localized Flooding of roads, water logging in low lying areas and closure of underpasses mainly in urban areas of the above region.
- Breaking of tree branches.
- Occasional reduction in visibility due to heavy rainfall.
- Reduction of visibility over sea area due to sea spray induced by strong wind and heavy rainfall.
- Disruption of traffic in major cities due to water logging in roads leading to increased travel time.
- Minor damage to kutcha roads.
- Possibilities of damage to vulnerable structure.
- Localized Landslides/Mudslides/landslips/mud slips/land sinks/mud sinks.
- Damage to horticulture and standing crops in some areas due to inundation.
- It may lead to riverine flooding in some river catchments (for riverine flooding please visit Web page of CWC)

❖ **Action Suggested**

Fishermen are advised not venture into

- Northeast & adjoining Eastcentral Arabian Sea and along & off Gujarat & adjoining north Maharashtra Coasts till 31st August.
- Northeast & adjoining eastcentral Arabian Sea off Gujarat coast and along & off Pakistan coasts during 31st August to 1st September.
- Northwest & adjoining westcentral Arabian Sea and along & off Pakistan and southeast Iran coasts from 31st August till 2nd September.

Contact: Cyclone Warning Division, Office of the Director General of Meteorology, India Meteorological Department, Ministry of Earth Sciences, E-mail: cyclonewarningdivision@gmail.com

- Westcentral & adjoining northwest Bay of Bengal till 1st September and along & off south Odisha and north Andhra Pradesh Coasts till 1st September.
 - Judicious regulation of offshore/onshore Operations
 - Judicious regulation of surface transports including railways and roadways.
 - Check for traffic congestion on your route before leaving for your destination.
 - Follow any traffic advisories that are issued in this regard.
 - Avoid going to areas that face the water logging problems often.
 - Avoid staying in vulnerable structure.
- ❖ **Agromet Advisories for Heavy Rainfall likely over Andhra Pradesh, south Odisha, Telangana and south Chhattisgarh**
- Make provision for draining out excess water from crop fields to avoid water stagnation in Gujarat State, Odisha and Andhra Pradesh.
 - Provide mechanical support to horticultural crops and staking to vegetables

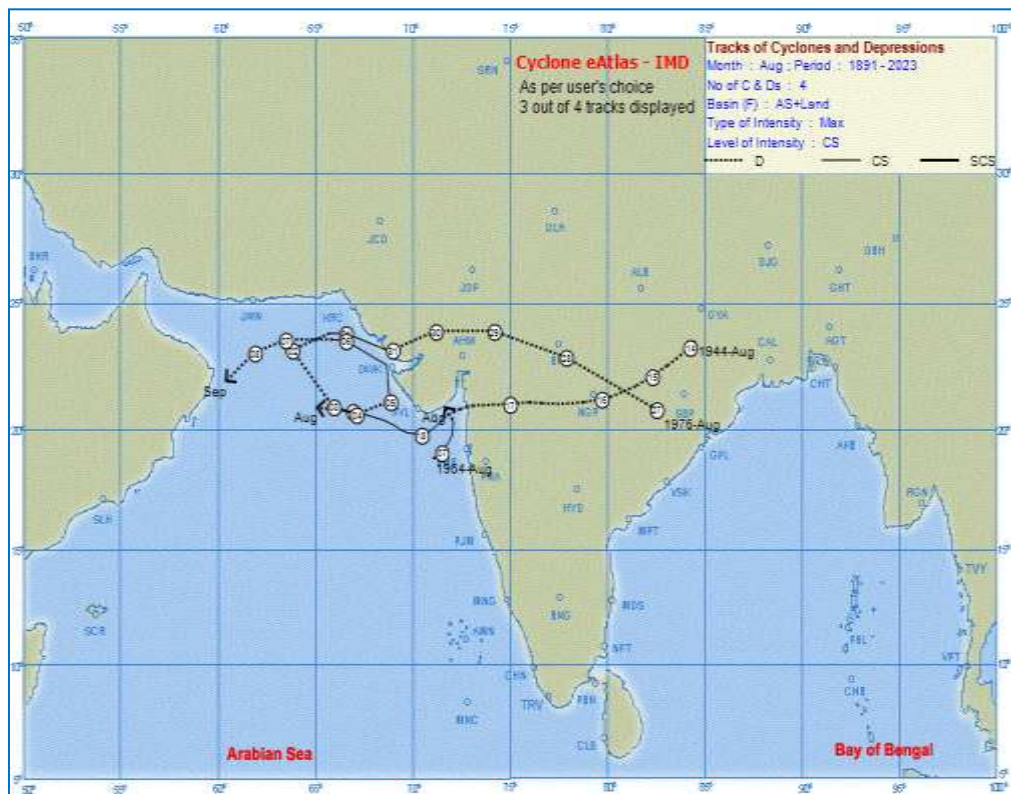
Associated Graphics are placed at **Annexure-II**. The 24 hours accumulated rainfall during 0830 hours IST of 30th August to 0830 hours IST of 31st August is placed at **Annexure-III**.

Next Press Release will be issued at 1430 hours IST of tomorrow, the 1st September, 2024.

Annexure-I

Development of cyclonic storms in the month of August over the Arabian Sea is a rare activity. However, during 1891-2023, 3 cyclonic storms developed over the Arabian Sea in the years 1944, 1964 and 1976. Out of these 2 developed from low pressure area over North Bay of Bengal and neighbourhood and 1 developed over Arabian Sea. All the three dissipated over the sea. Details of these cyclonic storms are given below:

- ❖ **1944:** A depression formed over Jharkhand on 14th August. It moved west-southwestwards across central parts of country and emerged into Northeast Arabian Sea Arabian Sea off South Gujarat coast. Thereafter, it moved southwestwards and intensified into a cyclonic storm over eastcentral & adjoining northeast Arabian Sea near South Gujarat coast around 18th August. Thereafter, it moved west-northwestwards as a cyclonic storm, away from India coast and weakened over Northeast Arabian on 19th August.
- ❖ **1964:** A depression formed over Eastcentral Arabian Sea off North Maharashtra coast on 7th August. It moved initially north-northeastwards, intensified into a cyclonic storm for a brief period and gradually recurved north-northwestwards and weakened into a low pressure area near South Gujarat coast in the same evening.
- ❖ **1976:** A depression formed over Odisha on 27th August. It moved across northern parts of country across Chhattisgarh, East Rajsthan, North Gujarat region and intensified into a cyclonic storm near Saurashtra and Kutch coast on 31st August. Thereafter, it made a loop over northeast Arabian Sea and weakened near Oman coast on 8th September.



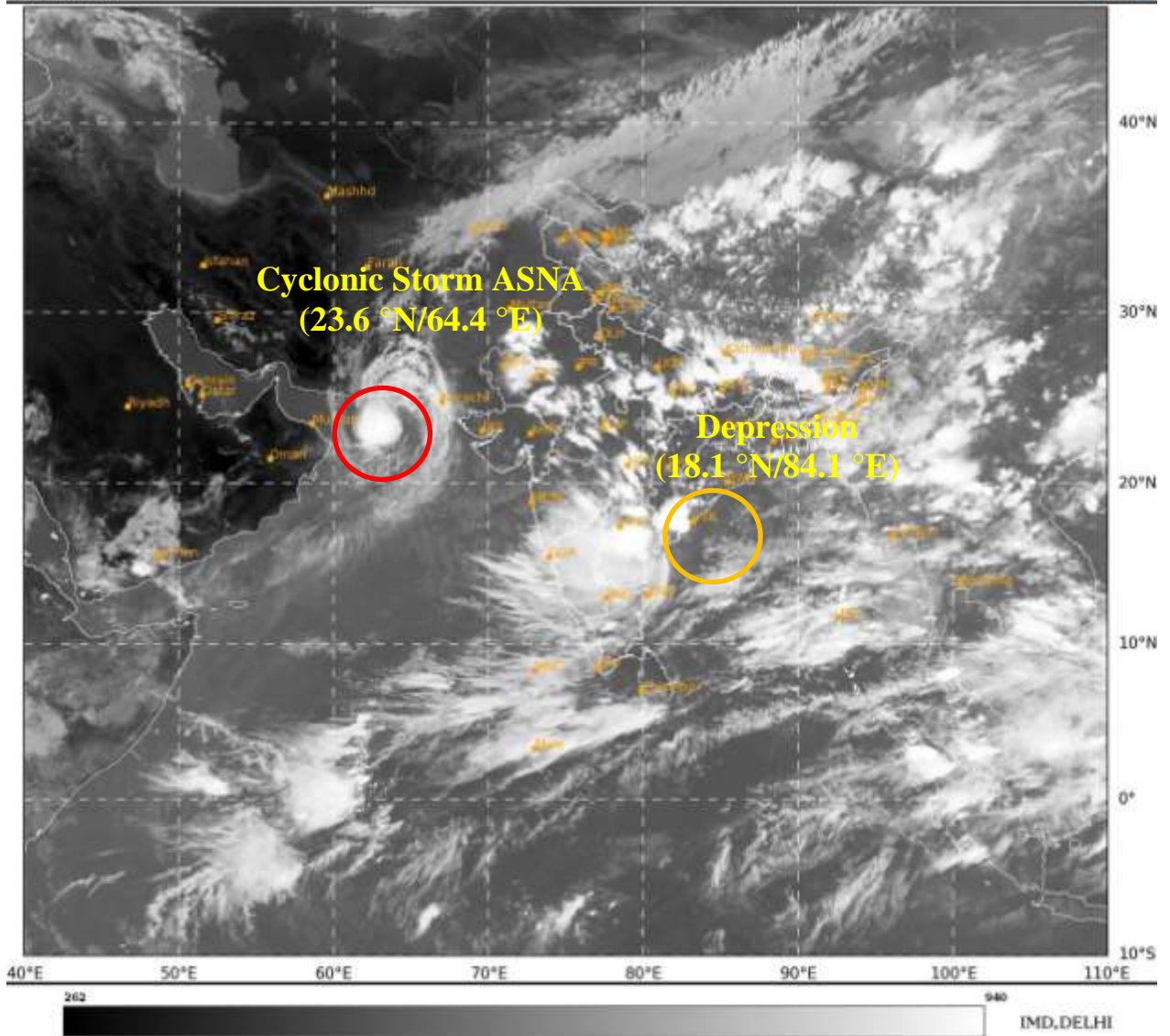
Tracks of cyclonic storms (≥ 34 knots or 63 kmph) in the month of August during 1891-2023 over the Arabian Sea

Contact: Cyclone Warning Division, Office of the Director General of Meteorology, India
Meteorological Department, Ministry of Earth Sciences, E-mail: cyclonewarningdivision@gmail.com

Annexure – II

SAT : INSAT-3DR IMG
IMG_TIR1 10.8 um
LIC Mercator

31-08-2024/(1045 to 1112) GMT
31-08-2024/(1615 to 1642) IST





OBSERVED AND FORECAST TRACK OF CYCLONIC STORM ASNA OVER NORTHEAST AND NORTHWEST ARABIAN SEA BASED ON 0600 UTC (1130 IST) OF 31ST AUGUST, 2024.



DATE/TIME IN UTC
 IST=UTC + 0530
 L: LOW PRESSURE AREA
 WML: WELL MARKED LOW PRESSURE AREA
 D: DEPRESSION (17-27 KT)
 DD: DEEP DEPRESSION (28-33 KT)
 CS: CYCLONIC STORM (34-47 KT)
 SCS: SEVERE CYCLONIC STORM (48-63KT)
 VSCS: VERY SEVERE CYCLONIC STORM (64-89 KT)
 ESCS: EXTREMELY SEVERE CYCLONIC STORM (90-119 KT)
 SuCS: SUPER CYCLONIC STORM (≥ 120 KT)

- LESS THAN 34 KT
- 34-47 KT
- ≥ 48 KT
- OBSERVED TRACK
- FORECAST TRACK
- CONE OF UNCERTAINTY



OBSERVED AND FORECAST TRACK OF CYCLONIC STORM ASNA OVER NORTHEAST AND NORTHWEST ARABIAN SEA BASED ON 0600 UTC (1130 IST) OF 31ST AUGUST, 2024.



DATE/TIME IN UTC
 IST=UTC + 0530
 L: LOW PRESSURE AREA
 WML: WELL MARKED LOW PRESSURE AREA
 D: DEPRESSION (17-27 KT)
 DD: DEEP DEPRESSION (28-33 KT)
 CS: CYCLONIC STORM (34-47 KT)
 SCS: SEVERE CYCLONIC STORM (48-63KT)
 VSCS: VERY SEVERE CYCLONIC STORM (64-89 KT)
 ESCS: EXTREMELY SEVERE CYCLONIC STORM (90-119 KT)
 SuCS: SUPER CYCLONIC STORM (≥ 120 KT)

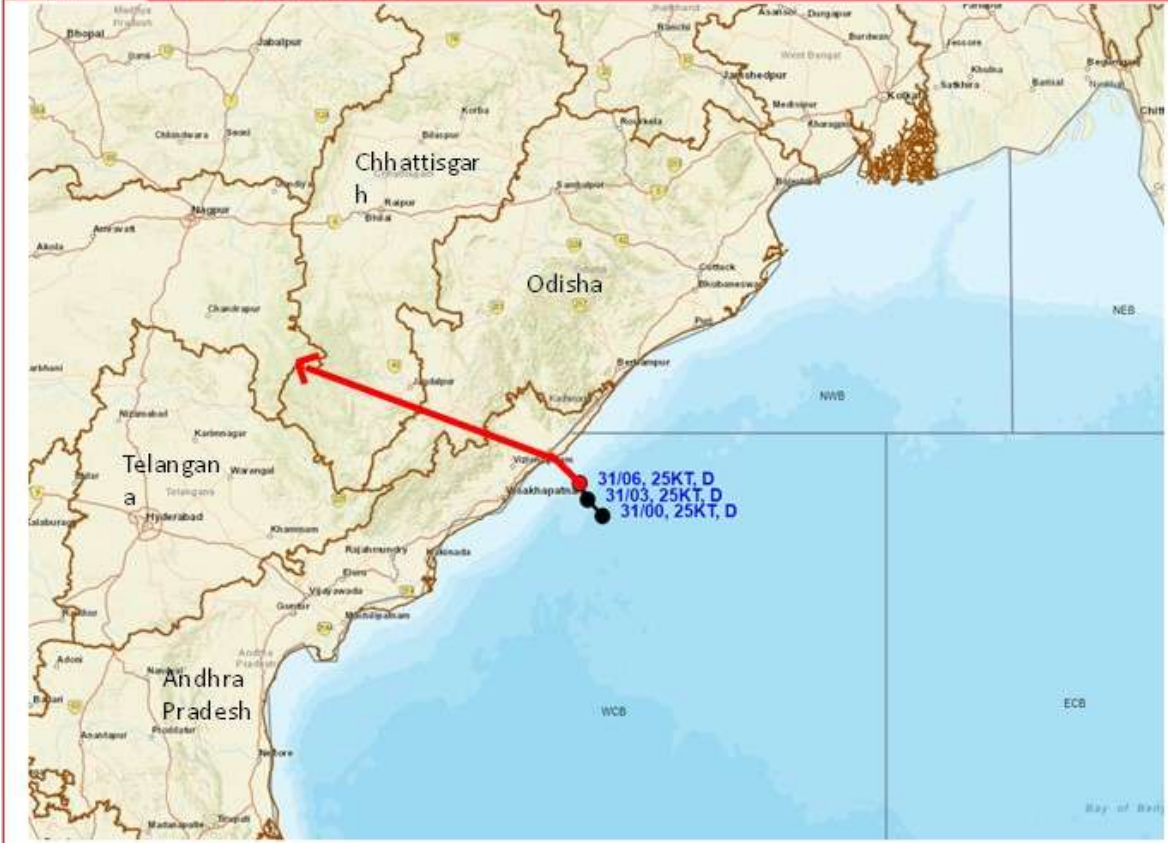
● LESS THAN 34 KT
 ○ 34-47 KT
 ● ≥ 48 KT
 — OBSERVED TRACK
 — FORECAST TRACK
 — CONE OF UNCERTAINTY
 AREA OF MAXIMUM SUSTAINED WIND SPEED:
 ■ 28-33 KT (52-61 KMPH)
 ■ 34-49 KT (62-91 KMPH)
 ■ 50-63 KT (92-117 KMPH)
 ■ ≥ 64 KT (≥118 KMPH)

IMPACT OVER THE SEA

MSW (knot/kmph)	Impact	Action
28-33 (52-61)	Very rough seas	Total suspension of fishing operations
34-49 (62-91)	High to very high seas	Total suspension of fishing operations
50-63 (92-117)	Very high seas	Total suspension of fishing operations
≥ 64 (≥118)	Phenomenal	Total suspension of fishing operations



OBSERVED AND FORECAST TRACK OF DEPRESSION OVER WESTCENTRAL AND ADJOINING NORTHWEST BAY OF BENGAL BASED ON 0600 UTC (1130 IST) OF 31st AUGUST, 2024.

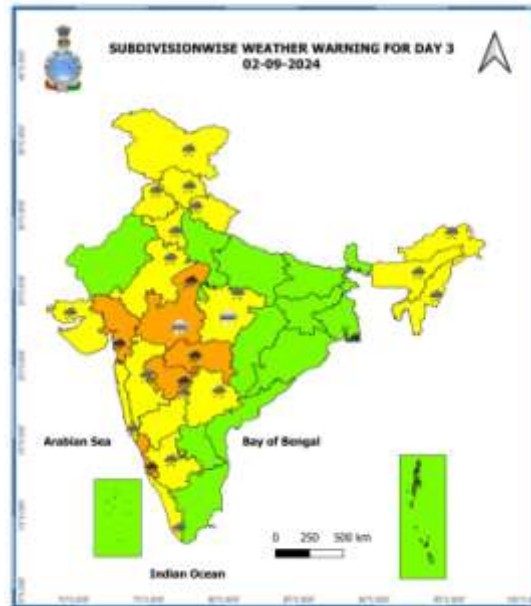
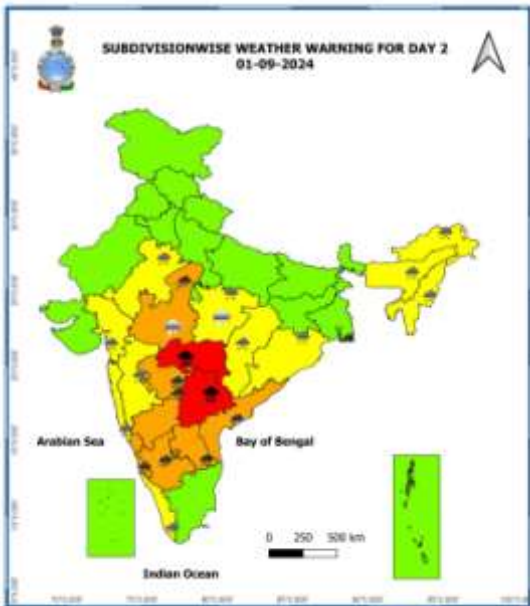
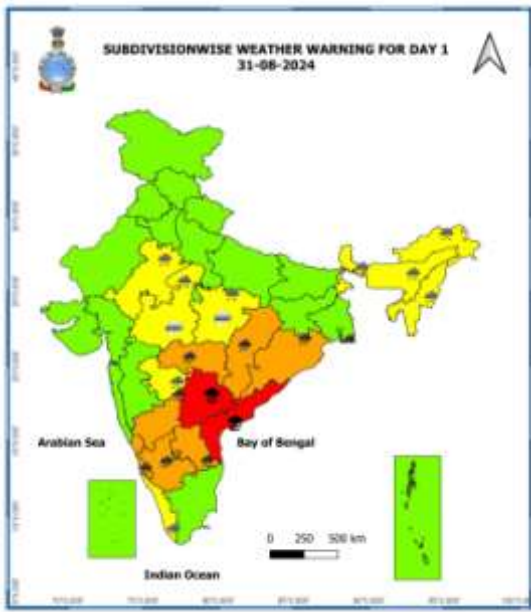


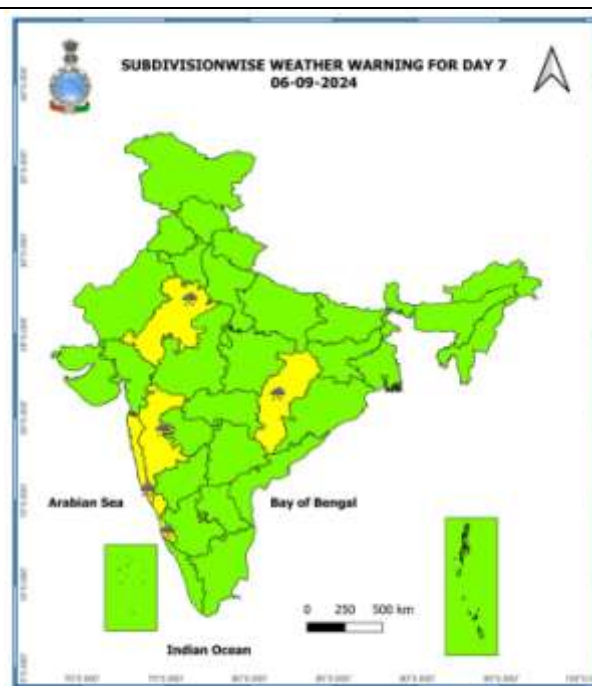
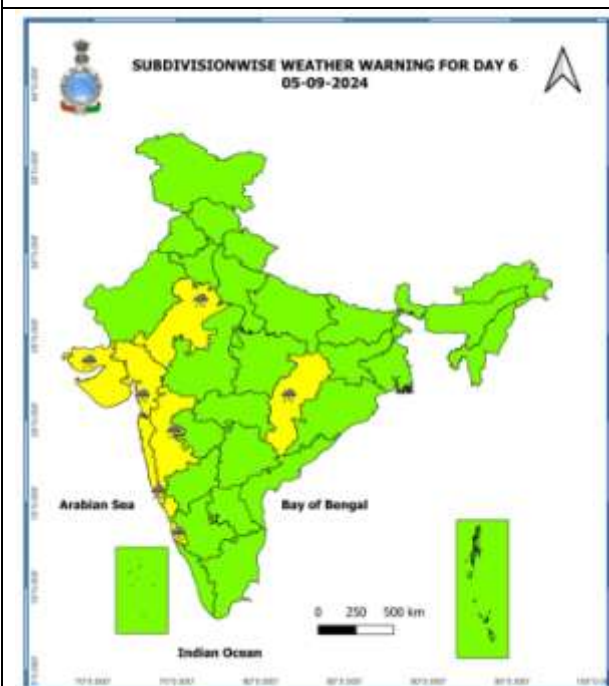
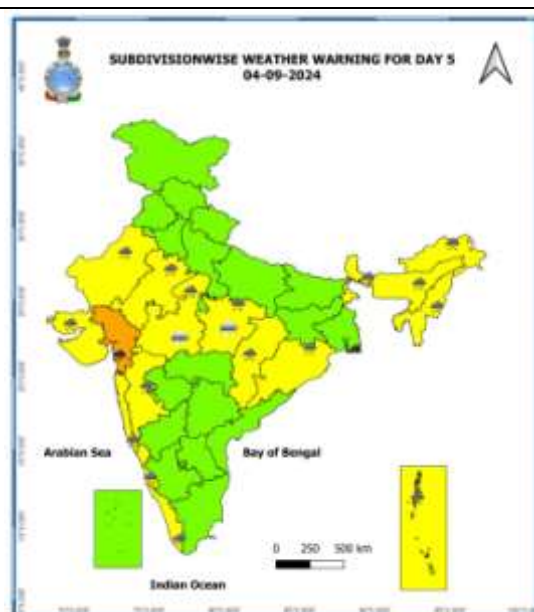
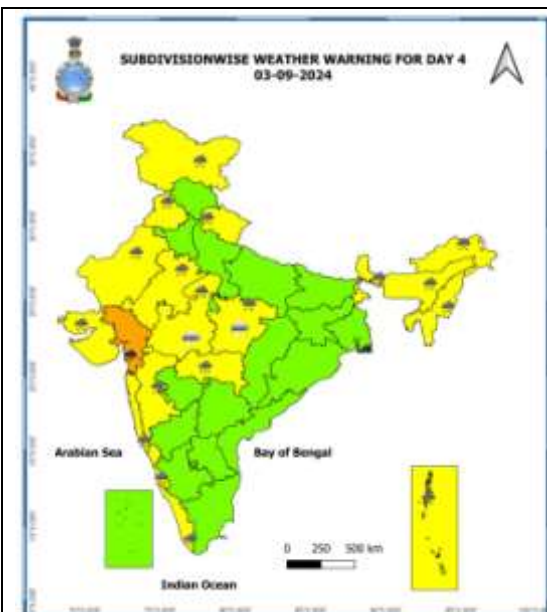
DATE/TIME IN UTC
 IST=UTC + 0530
 L: LOW PRESSURE AREA
 WML: WELL MARKED LOW PRESSURE AREA
 D: DEPRESSION (17-27 KT)
 DD: DEEP DEPRESSION (28-33 KT)
 CS: CYCLONIC STORM (34-47 KT)
 SCS: SEVERE CYCLONIC STORM (48-63KT)
 VSCS: VERY SEVERE CYCLONIC STORM (64-89 KT)
 ESCS: EXTREMELY SEVERE CYCLONIC STORM (90-119 KT)
 SuCS: SUPER CYCLONIC STORM (\geq 120 KT)

● LESS THAN 34 KT
 ○ 34-47 KT
 ○ \geq 48 KT
 — OBSERVED TRACK
 — FORECAST TRACK
 ▲ CONE OF UNCERTAINTY

WCB: WESTCENTRAL BAY OF BENGAL
 ECB: EASTCENTRAL BAY OF BENGAL
 NWB: NORTHWEST BAY OF BENGAL

Weather Warning Graphics





- Action may be taken based on **ORANGE** AND **RED** COLOUR warnings.
- Vulnerable regions likely urban and hilly areas action may be initiated for heavy rainfall warning.
- As the lead period increases forecast accuracy decreases.

Flash Flood Guidance

24 hours Outlook for the Flash Flood Risk (FFR) till 1130 IST of 01-09-2024 :

Low to Moderate flash flood risk likely over few watersheds & neighbourhoods of following Met Sub-divisions during next 24 hours.

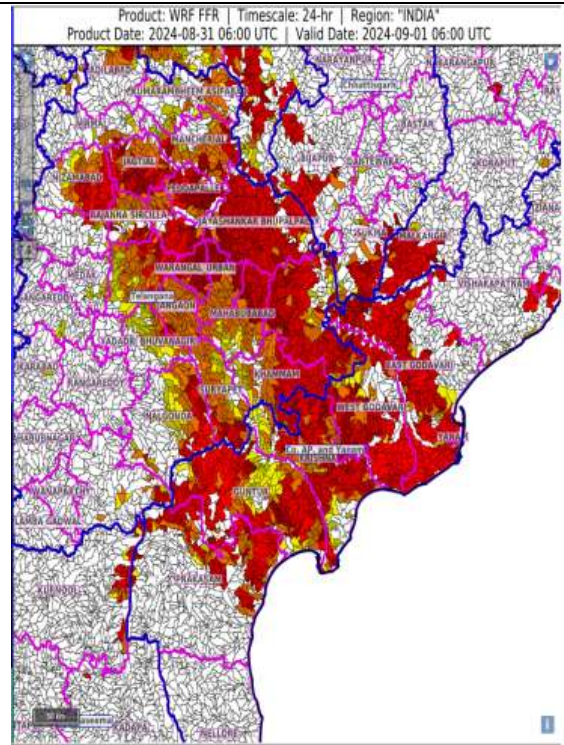
Coastal AP & Yanam - East Godavari, Guntur, Krishna, Prakasam, West Godavari, Visakhapatnam and Yanam districts.

Rayalaseema - Kurnool district.

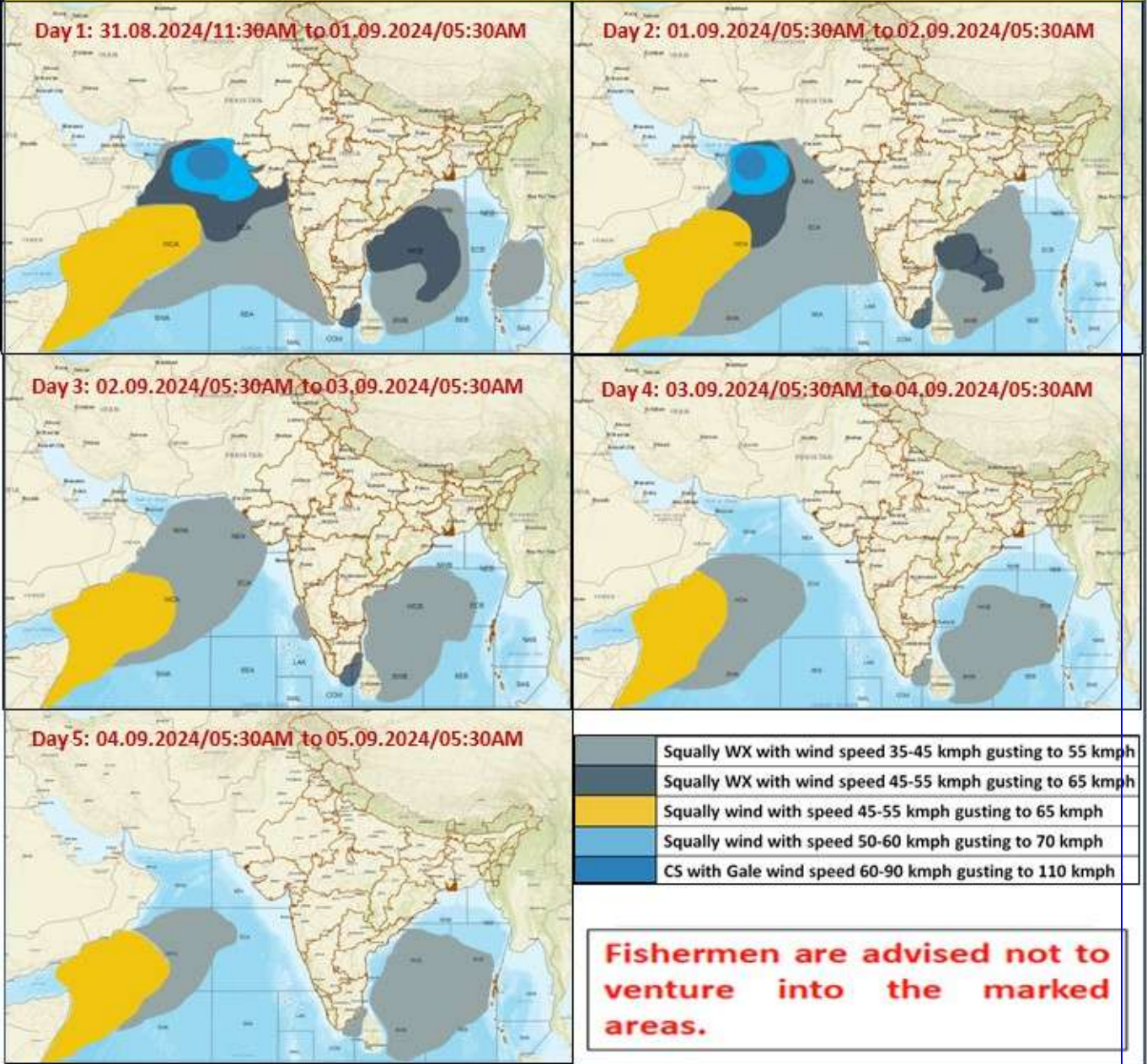
Telangana - Adilabad, B. Kothagudem, J. Bhupalpally, Jagtial, Jangaon, Khammam, Kumaram Bheem, Mahabubabad, Mancherial, Nalgonda, Nirmal, Nizamabad, Peddapalle, Rajanna Sircilla, Siddipet, Suryapet, Warangal_Rural and Warangal_Urban districts.

Chhattisgarh - Bijapur and Sukma districts.

Surface runoff/ Inundation may occur at some fully saturated soils & low-lying areas over AoC as shown in map due to expected rainfall occurrence in next 24 hours.



Fishermen Warning Graphics



Annexure –III

Significant Rainfall recorded during past 24 hours till 0830 hours IST of today, 31.08.2024 (in cm):

❖ **Coastal Andhra Pradesh:** Masulipatnam Cdr (dist Krishna) 18, Vijayawada(arg) (dist Ntr District) 18, Gudivada (dist Krishna) 17, Kaikalur (dist Eluru) 15, Narsapuram (dist West Godavari) 14, Amaravati (dist Guntur) 13, Vijayawada A.p. (dist Ntr District) 12, Mangalagiri (dist Guntur) 11, Nandigama (dist Ntr District) 11, Bheemavaram (dist West Godavari) 11, Palakoderu (dist West Godavari) 9, Tenali (dist Guntur) 9, Tiruvuru (dist Ntr District) 9, Guntur (dist Guntur) 9, Eluru (dist Eluru) 8, Nuzvid (dist Eluru) 8, Atchampet (dist Palnadu) 8, Tadepalligudem (dist West Godavari) 7, Repalle (dist Bapatla) 7, Kunavaram (dist Alluri Sitharamaraju) 7, Karamchedu (dist Bapatla) 7,

❖ **Telangana:** Damaragidda (dist Narayanpet) 13, Madhira (dist Khammam) 9, Dornakal (distMahabubabad) 9, Kothaguda (dist Mahabubabad) 9, Thimmajipeta (dist Nagarkurnool) 9, Bonakal (dist Khammam) 9,

❖ **Odisha:** Malkangiri 11cm, Nandapur (Koraput) 8cm, Junagarh (Kalahandi) 5cm